

Burwash, Sussex

Βυζαντινή

Church of St Bartholomew

Church fabric

Grid ref .....TQ 67 24

Date

Tower – about 1090. Norman twin belfry openings c. 1100

*Naim & Pevsner: Buildings of England – Sussex.*

Definitely overlap period but tower has some interesting features. Walls of large rubble, over 3' thick at base, some ashlar repair work on S face near top. Built in three, recessed stages

Tower N face

Second stage has narrow slit window with round-head cut from single stone. Jambs of two large stones each side. Small rectangular imposts flush with wall. Third stage has double-head belfry opening: each arch-head of single block shaped above and below. Jambs could perhaps be described as upright-and-flat. Centre double-head supported by straight baluster shaft with fluted cushion capital standing on straight-chamfered cubic base. This window appears original except for baluster shaft which has been renewed.

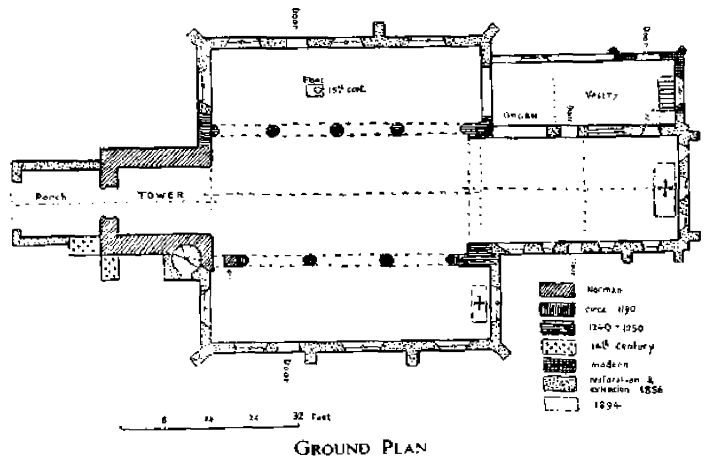
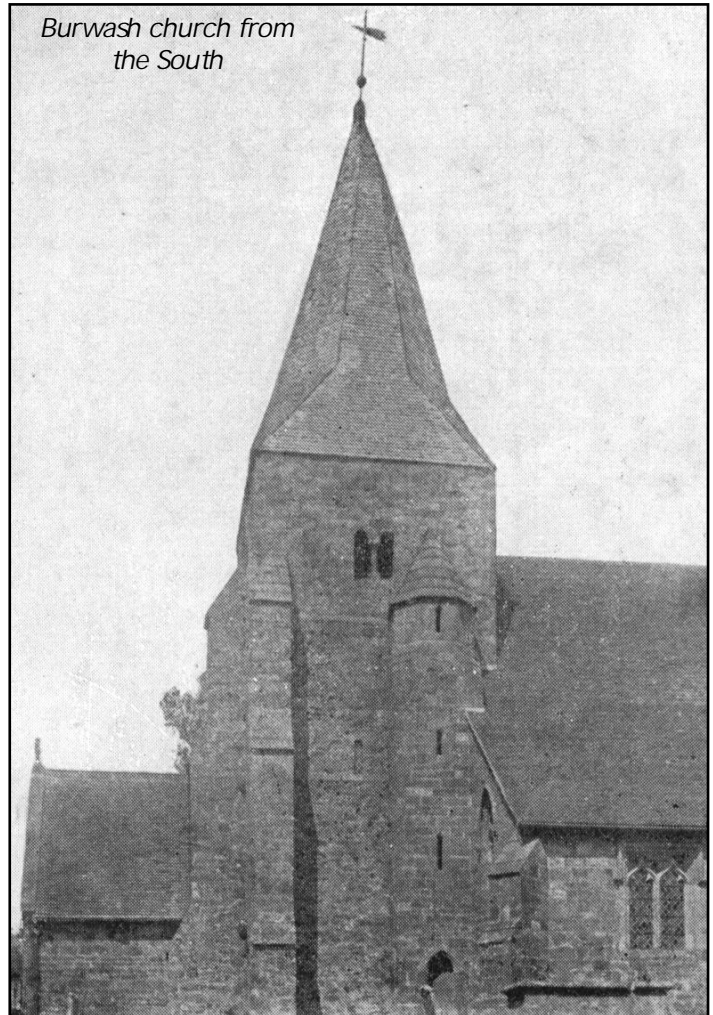
Tower E face

Third stage has double-head belfry opening similar to that on N face, but probably renewed.

Tower S face

Second stage has narrow split window, similar to that on N, but no imposts. Third stage has double-head belfry opening as on N face, but heads definitely and rest of opening very probably renewed.

*Eadmund (Malcolm) Dunstall*



GROUND PLAN