



Colchester, Essex

Colneceafceap

Holy Trinity

Church fabric

Grid ref TL 996 252

Date

Tower, nave wall. Late Anglo-Saxon

Fisher

W tower and nave W wall – period C

Taylor

Tower

11'6" square interior. Walls of flint, about 3'6" thick, with considerable profusion of Roman bricks. Quoins entirely of Roman bricks. Built with straight joint against earlier wall of nave. Three stages separated by two string-courses, consisting of two courses of projecting Roman bricks. Stages not recessed.

Tower, ground stage

More than half total height of tower. About three times height of second stage and considerably taller than third stage. N and S walls about half-way up have large, wide, round-head windows; heads and jambs in Roman bricks; sills of walling.

W wall has gable-head W doorway made entirely of Roman bricks. Gable sides are of Roman bricks, sloping at an angle of about 45° and finished clumsily at apex. Imposts constructed of three, over-sailing, double courses of bricks, arranged in characteristic Anglo-Saxon, three-stepped pattern. Gable-head hood-mould of three courses of bricks with its own imposts of three courses projecting from wall, but not over-sailing, carried below imposts to ground as pilasters consisting of horizontally-laid bricks.

Tower, second stage

N and S walls have shallow, round-head, centrally-placed recess resting on string-course. Heads and jambs of walling with occasional Roman bricks. West wall has two, double-splay windows, now blocked thinly, of walling and Roman bricks, resting on string-course: between these but lower is taller, round-head window with head and jambs and sill largely of Roman bricks. String course forms imposts, so most of window is below string-course.

Tower, third stage

Belfry: two ranges of windows. Lower range of openings of one tall, round-head window in each wall, resting on string-courses, which act as sills, outlined in mixed flint and Roman bricks. S window only built in central bay of five bays round-head blind wall arcading, which occupies entire wall width between quoins and constructed wholly of Roman bricks.

Upper range of windows of double, round-head windows, outlined in Roman bricks and separated by rectangular pier of Roman bricks (really just a piece of walling). Between two window ranges are slight traces of low, round-head wall arcading, indicated by small fragments of bricks, most of which have probably fallen out. E wall arches continue down as strips of upright bricks, but work very weathered and indistinct.

Tower arch

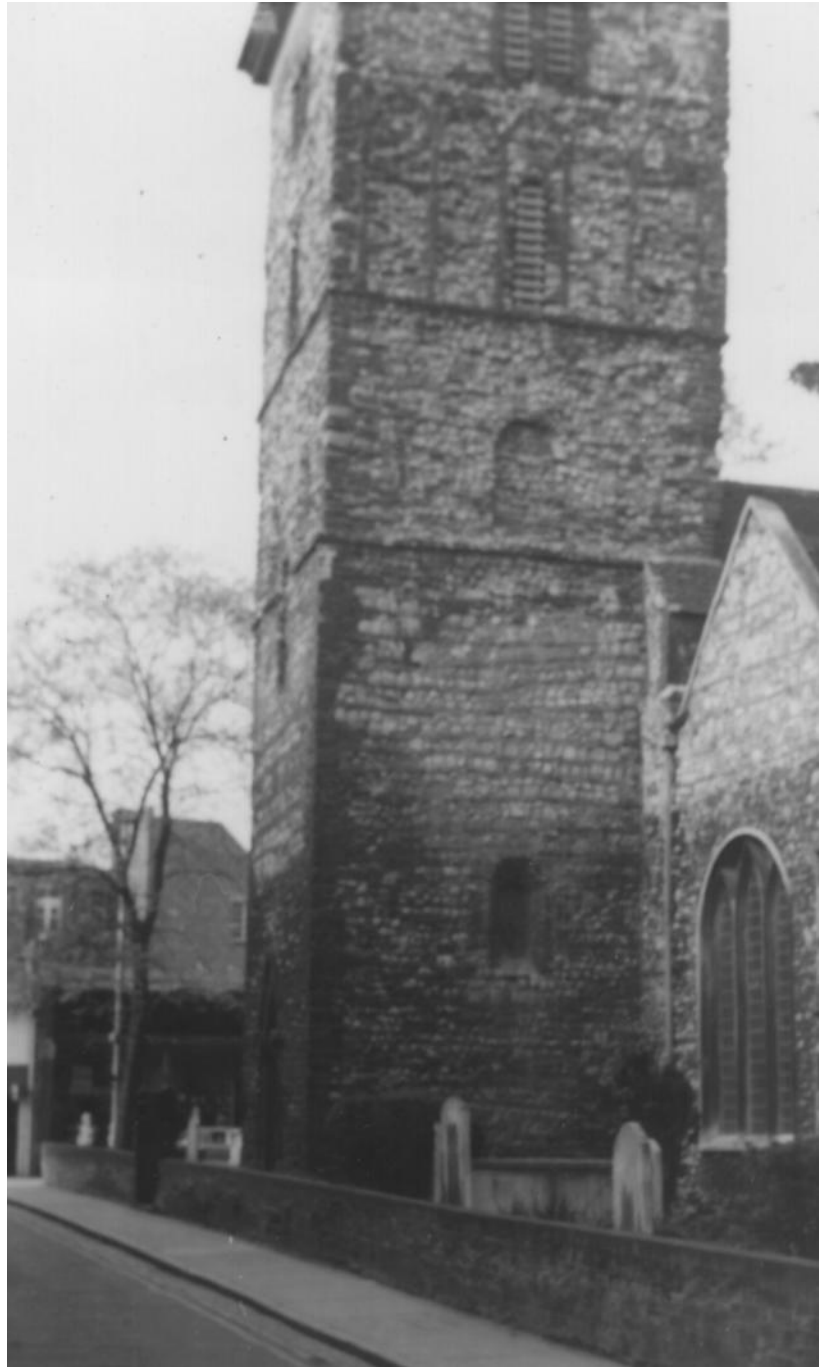
Later than wall. A late Anglo-Saxon insertion, probably the same date as the tower; entirely of Roman bricks. Round-head, of one square-cut order. Jambs have bases of plain, triple-stepped offsets. Large imposts are of three, over-sailing, double courses: both faces have strip work hood-mould of Roman bricks, resting on imposts, but continuing below as vertical, brick pilaster-work to about half-way to ground: possibly originally extending to ground.

Nave

W wall original, width: 18'6". Original wall about 28' high to gable base, line of which indicated inside tower by raking break in upper bonding on tower E wall. Below gable in second stage of tower are traces of a blocked opening.

Church is not now used as a church.

Colchester, Essex



Photograph by Jane Dunstall