

Jevington, Sussex

Γεοργινατun

Church of St Andrew

Church fabric

Sculpture

Grid ref TQ 561 015

Saxon tower

This is the oldest part. Size ... 18' square on the inside, just over 23' on the outside.

Date c. 900-950.

The original windows, now blocked in, may be traced clearly outside on the N and S faces about 12' above ground level: their arched headings are of Roman bricks: note the herring-bone work and the typical long-and-short work: and the attractive modern carvings as capitals of columns of windows. The present windows are of much later date.

Saxon sculpture

On the N wall of the nave, near to the tower: discovered when the second stage of the belfry was re-floored in 1875. It may be a coffin lid: it may be part of a mural tablet - *c.f.* CHICHESTER CATHEDRAL, (*q.v.*). Murals and tablets were used for teaching purposes when illiteracy was

common. The tablet shows Christ, wearing his resurrection garment (the loin cloth) thrusting His cross-shaped sword into the open mouth of the beast's head turned backwards on its shoulder: Good overcomes Evil. The serpent of the Garden of Eden is shown opposite.

From the Church Guide, printed by Sumfield and Day Limited, Eastbourne.

The tablet represents the Harrowing of Hell, a common type in this period. The subject makes the possibility that it was intended as a grave slab likely.

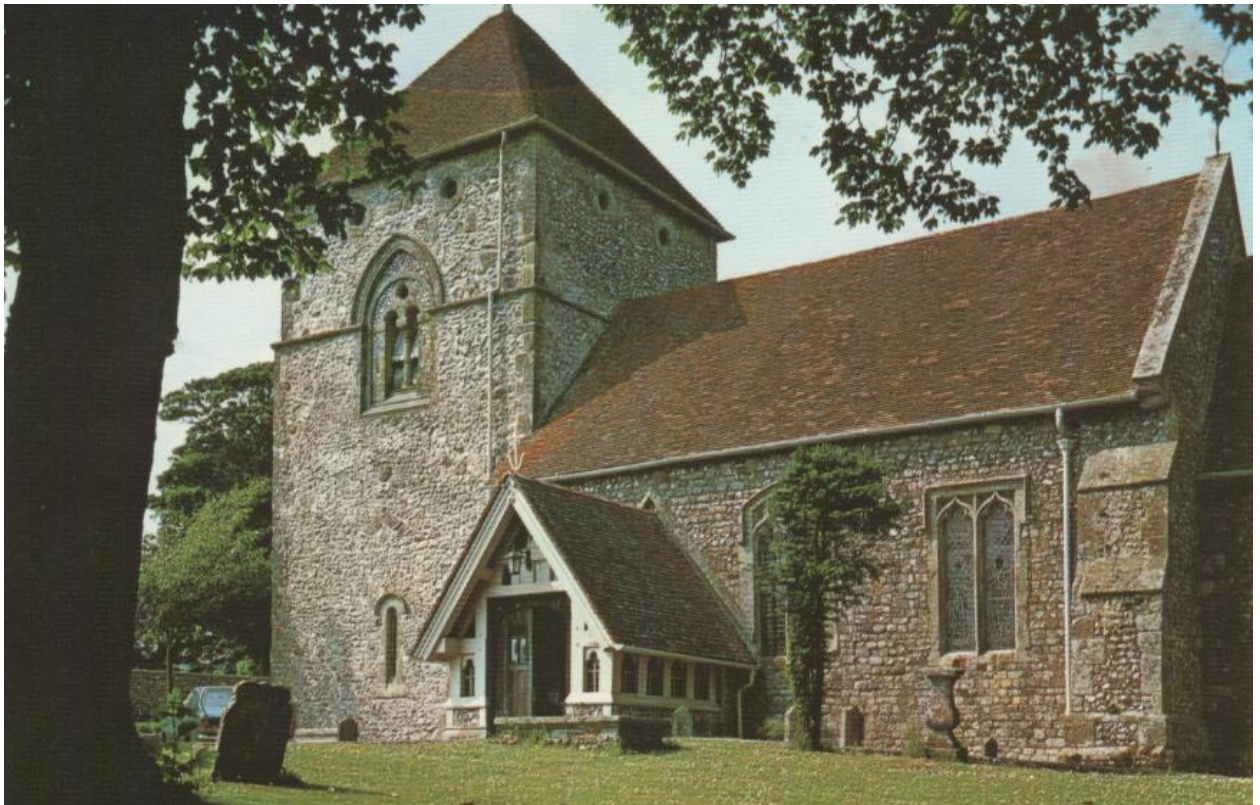
MD

c. 1100

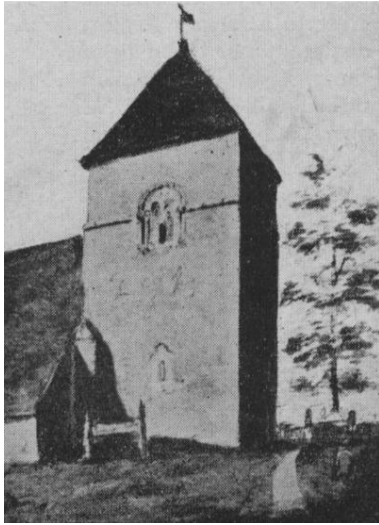
Kendrick: Late Saxon and Viking Art: London 1949, p120.

c. 1050

D. Talbot Rice: English Art 871-1100: Oxford 1952, p95.

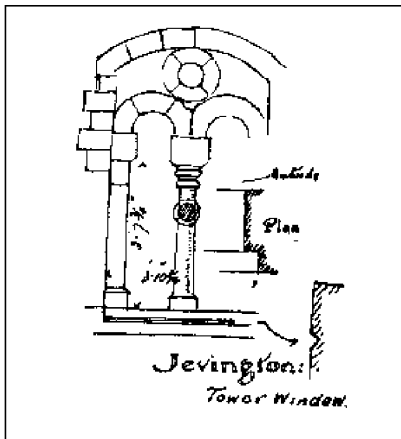


Jevington, Sussex



Far left
The tower in 1804
showing the original round
shape of the hood above the
window opening

Left
The tower in c. 1960
showing the gothic, pointed
shape that now characterises
this feature



Christ Harrowing Hell

All monochrome photographs from
church guide book