



Kirk Hammerton, Yorkshire, W Riding

Ἰαμορτουν

Church of St. John the Baptist

Church fabric

Grid ref SE 465 555

Location

In centre of Kirk Hammerton on N side of E-W road.

Date

Tower, nave, chancel.

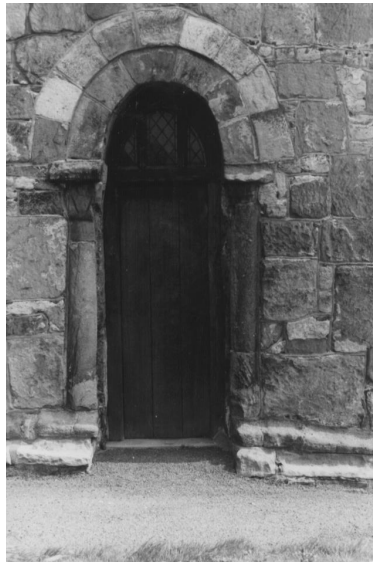
Fisher

Nave and chancel – possibly as early as period A. West tower – period C1 with possibly later W doorway.

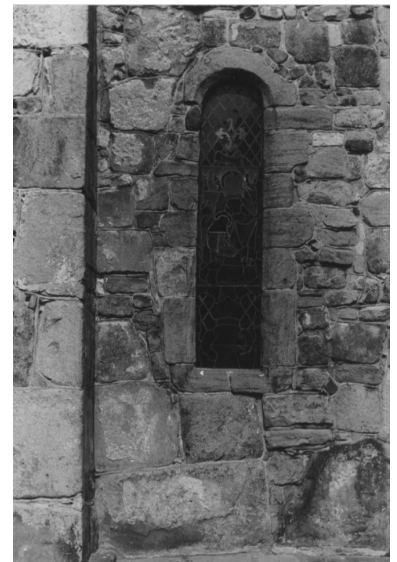
Taylor

Originally dedicated to St. Quentin. The tower west doorway is Anglo-Saxon. The North aisle was inserted AD1150. The chancel arch restored, but Anglo-Saxon.

Guide Book



West doorway



Window in South wall of chancel

