



Wittering, Northamptonshire

Ἰθρυερινγίτζε

Church of All Saints

Church fabric

Grid ref TF 056 020

Date

Nave, chancel - period C.

Taylor

Notes

Walls large rubble, coursed - probably Barnack stone. Remains of square plinth.

Nave

Exterior. NW quoin upright-and-flat, pseudo long-and-short and very regular. NE quoin upright-and-flat, partly pseudo long-and-short, visible on interior from North chapel (St Michael's RAF). SE quoin upright-and-flat, pseudo long-and-short

Chancel Exterior

Chancel E quoins up-and-flat, pseudo long-and-short. Very regular.

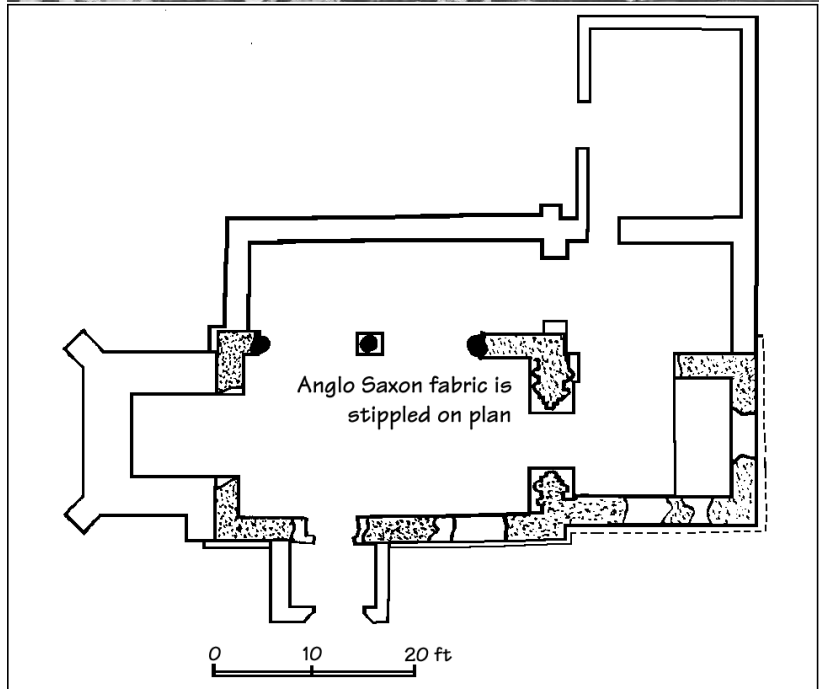
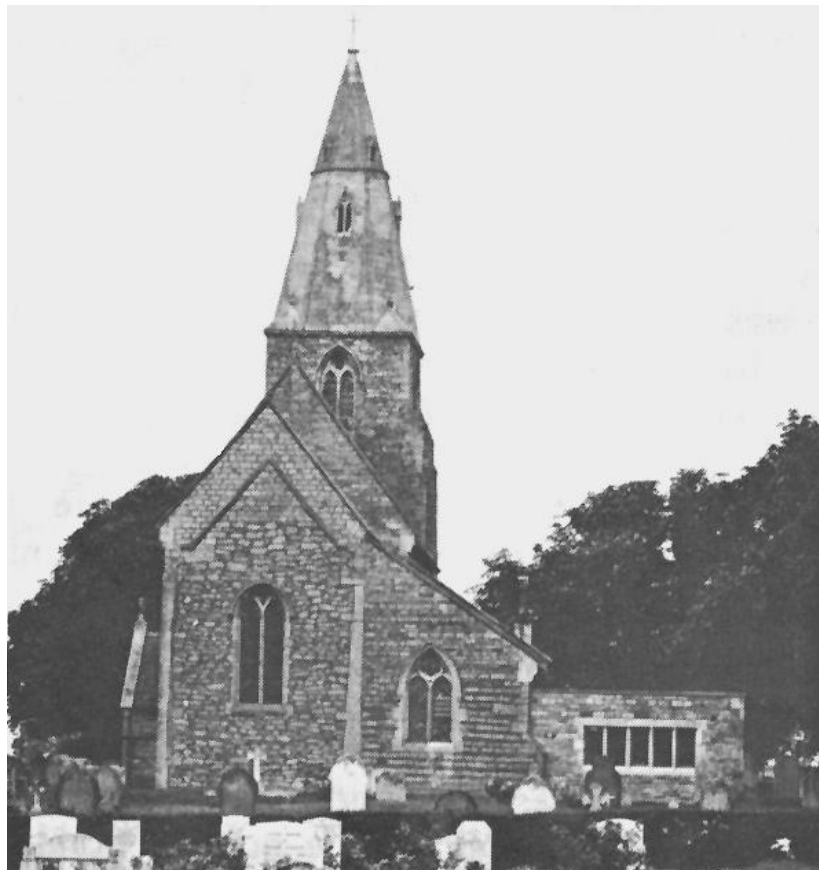
Chancel Interior

The chancel arch is very fine, of a square order with massive block impost slightly chamfered. The West face has a half-round soffit roll around the arch-head and down the face of the jambs, with two square-cut soffit rolls, one each side of half-round strip-work round arch-head and at side of jambs

There is a square-cut hood mould about 9" from the arch-head with separate imposts, but cut from the same stone as the jamb. The imposts are carried back.

Both half-round pilasters and square-cut pilasters have capitals and bases of cube and cylindrical type.

The East face has half-round pilasters on jambs and arch-



Wittering, Northamptonshire

head, but no hood mould. The arch-head is of segmental stones with slightly bulbous stones at crown.

