



Wootton Wawen, Warwickshire

Ἰουδαίου

Church of St Peter

Church fabric

Grid ref SP 133 632

Date

First half C11.

Baldwin Brown and Vict. Co. History

Central tower, lower three stages, tower arches – period C3.

Taylor

Tower

Lower three stages Anglo-Saxon. Originally definitely central between narrow nave and chancel, with S wing or porticus and N doorway leading to something or somewhere other than porticus. Much plaster on internal and external walls sufficient removed in 1906 to show nature of masonry: rough small rubble with occasional few larger but undressed stones. Quoins upright-and-flat work plainly visible in nave on interior E wall (i.e. former W exterior wall of tower) to S of tower arch where some plaster removed to show tower quoins and straight joint between tower and nave.

Access to upper storey of tower by ladders of solid baulks form opening in W end of tower N wall, covered by modern out-building.

Second stage has small, narrow opening in N wall with plastered internal splay and elliptical arch-head on interior: exterior modern brick, probably only crude repair work. Other openings, window and doorway, later.

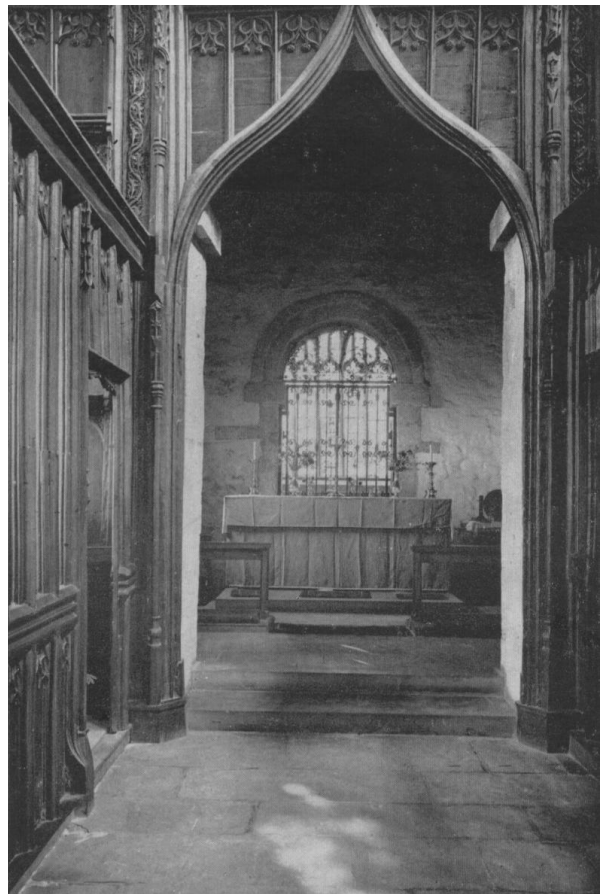
Third stage has possible Anglo-Saxon window in each wall with round-head or segmented head and rough jambs, three built up flush with walls but outline visible on exterior. E window blocked with thin filling of bricks flush with external wall face; on interior recess shows rough rubble splaying. Exterior E face has marks of gable-roof of former high chancel.

Tower arches

Ground stage of tower has round-head opening in all four walls, of different sizes.

N arch. Width 4'1", height to imposts 6', height to crown of arch 8'9". Has flat lintel with thin (about 4"-5") round head of voussoirs above (c.f. MISERDON, AMPNEY CRUCIS, WINSTON, Gloucestershire, but here tympanum filled with rubble), tympanum filled with glass and probably

modern. Upper edge of lintel between arch-head springs is plain chamfered (e.g.s. at WINSTON, AMPNEY CRUCIS, but not MISERDON which is of more primitive construction), these details common to a number of Cotswold churches. Wootton unusual but not unique in that two bottom arch stones at spring not voussoirs, as those above, but about 2' long and cut on both lower and upper sides to arch shape (cf. BREAMORE, Hampshire.) All are through-stones as far as blocking. Springings set back about 1" behind jamb face, arch-head flush with and resting on imposts. Jambs of Escomb type, upright-flat-upright-flat-upright, through-stones as far as blocking. Above top uprights are rough slab imposts running considerable distance into walls, and projecting 2"-3" E-W from jamb soffits and wall face. Arch blocked on exterior where jambs different form



Wootton Wawen, Warwickshire

those within, each constructed of large through-stones.

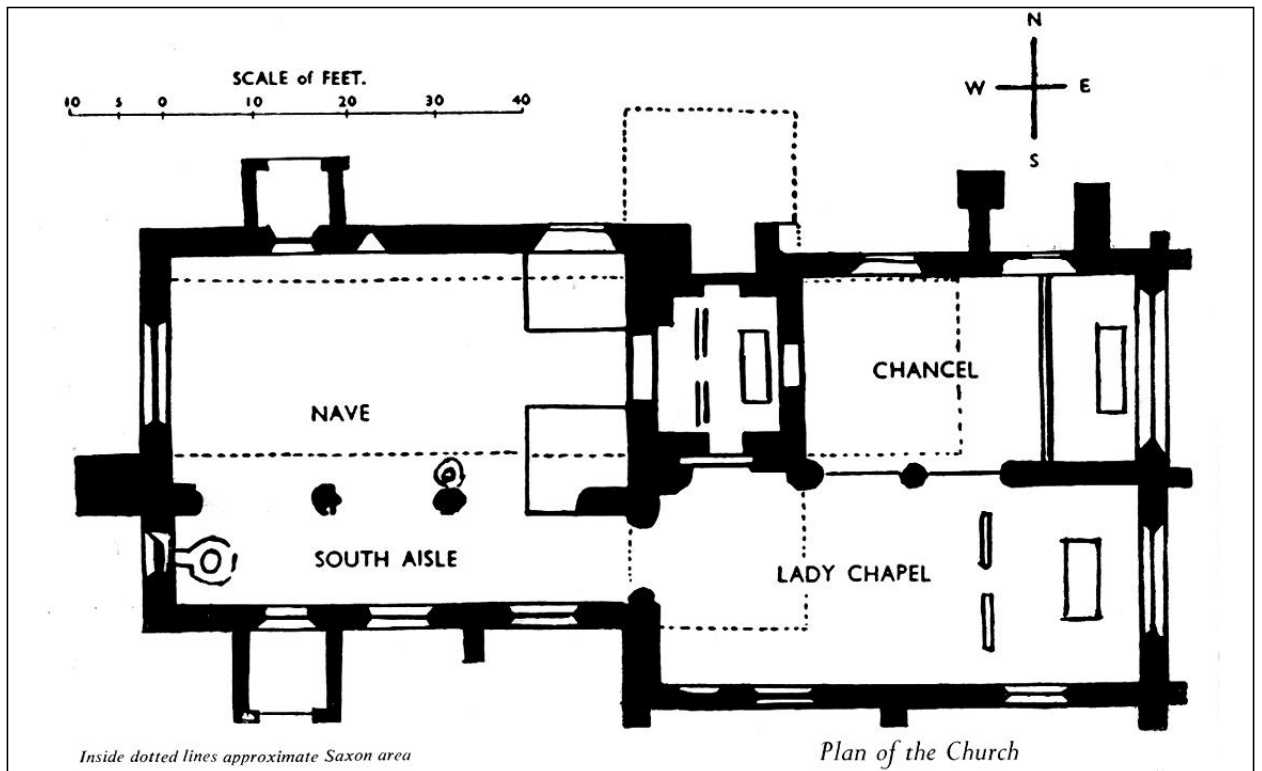
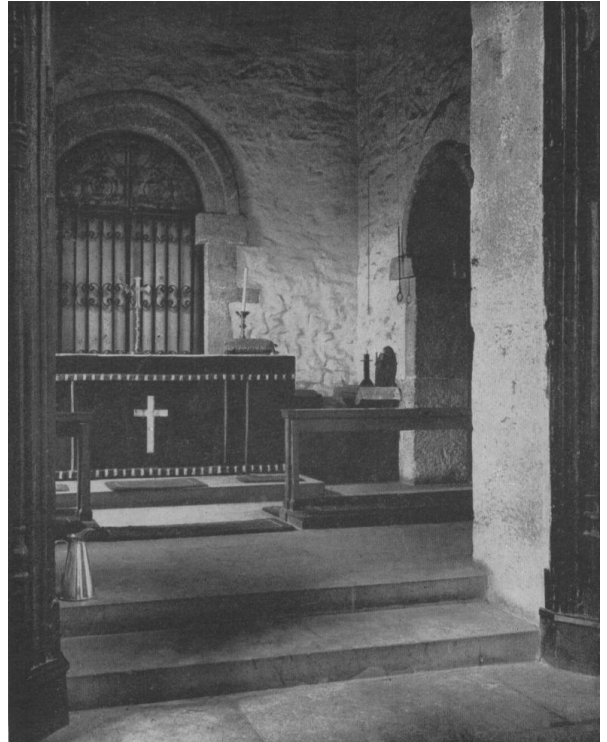
S arch. Width 4'2½", height to imposts 6', height to crown of arch 8'10". Similar to N arch except that jambs are of two uprights and two flats, upper flat immediately below imposts.

E or chancel arch. Width 4'8", height to imposts 7'3", height to crown of arch 11'3". Jambs of three uprights and two flats, top uprights under imposts. Head of voussoirs, most through-stones and genuine keystones on E face (very unusual in Anglo-Saxon churches) but not on W; projects 1½" from wall face. No strip work on E face. W face has strip work round head only, ending at imposts.

W arch. Biggest, width 6'9", height to imposts 9'4", height to crown of arch 14'3". Voussoirs not through-stones and of irregular lengths. Imposts of large blocks, similar to impost of other three arches. Jambs below differ from each other: S jamb has two uprights and two flats, one flat immediately below impost; N jamb has one upright with one flat above, and above that two uprights. E face of S jamb has hollow rebate, possibly not original, for door.

Nave

Walls 2'10" thick, which confirms post Anglo-Saxon date. No Anglo-Saxon church can have walls of nave thicker than tower walls.



Inside dotted lines approximate Saxon area

Plan of the Church