

# Cutha's Chronicles

Anglo-Saxon Adventures

*EALA!* Hello!



Winter is over and spring is here!

We can start to grow things on the farm, so that we can have *fresh* food at last.

© **COPYRIGHT NOTICE:** *Cutha's Chronicles* is written by Karl Wittwer and illustrated by Paul Finlow-Bates for *Wiðowinde*, journal of *Ða Engliscan Gesiðas* (The English Companions), the Society for everyone who wants to find out more about the Anglo-Saxon period. This pull-out formed part of *Wiðowinde* 153 (Spring 2010). *Cutha's Chronicles* may be freely photocopied *entire* for educational purposes, but illustrations and text may not be extracted, separated, or reproduced for commercial gain.

BM Box 4336 London WC1X 3XX

[www.tha-engliscan-gesithas.org.uk](http://www.tha-engliscan-gesithas.org.uk)

Copies of PDF files of previous *Chronicles* are available at [www.tinyurl.com/gesithas](http://www.tinyurl.com/gesithas)

The crops are tiny just now – but they will be better to eat than stored food.



Here are some of the things we grow:



Corn for making bread,

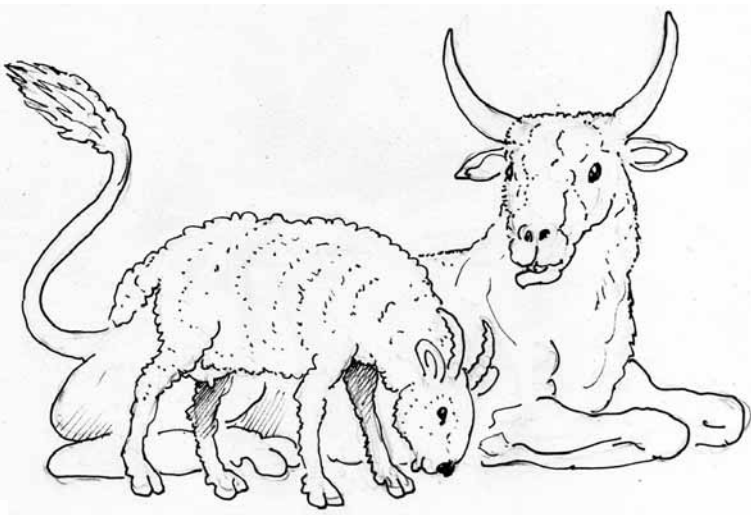
Garlic and onions and leeks, to make our food taste good.

Parsnips and Turnips,

Radishes,

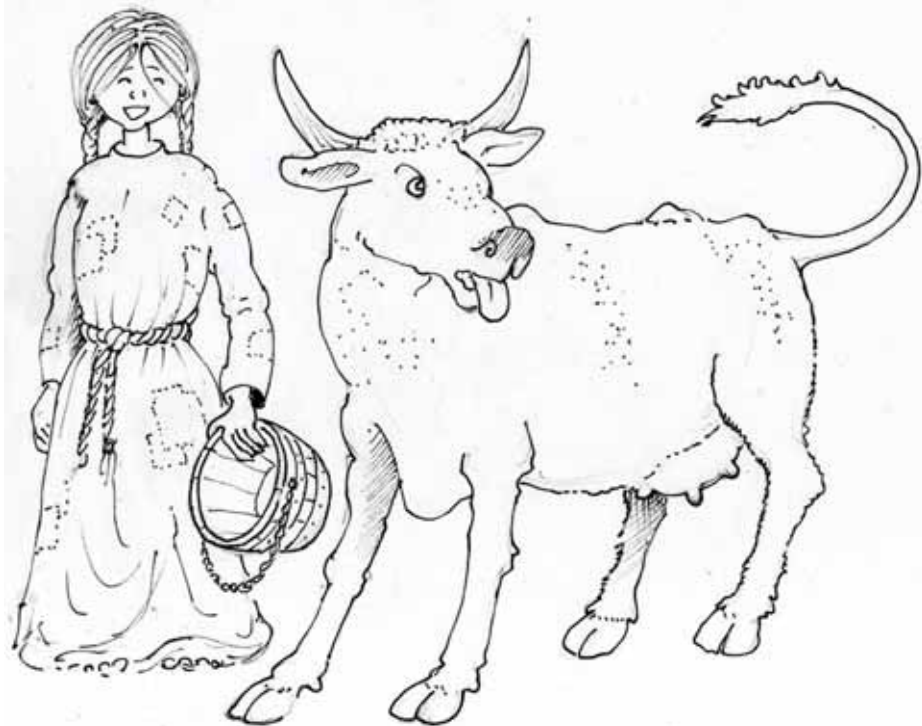
And Cabbages!

And we have animals for meat

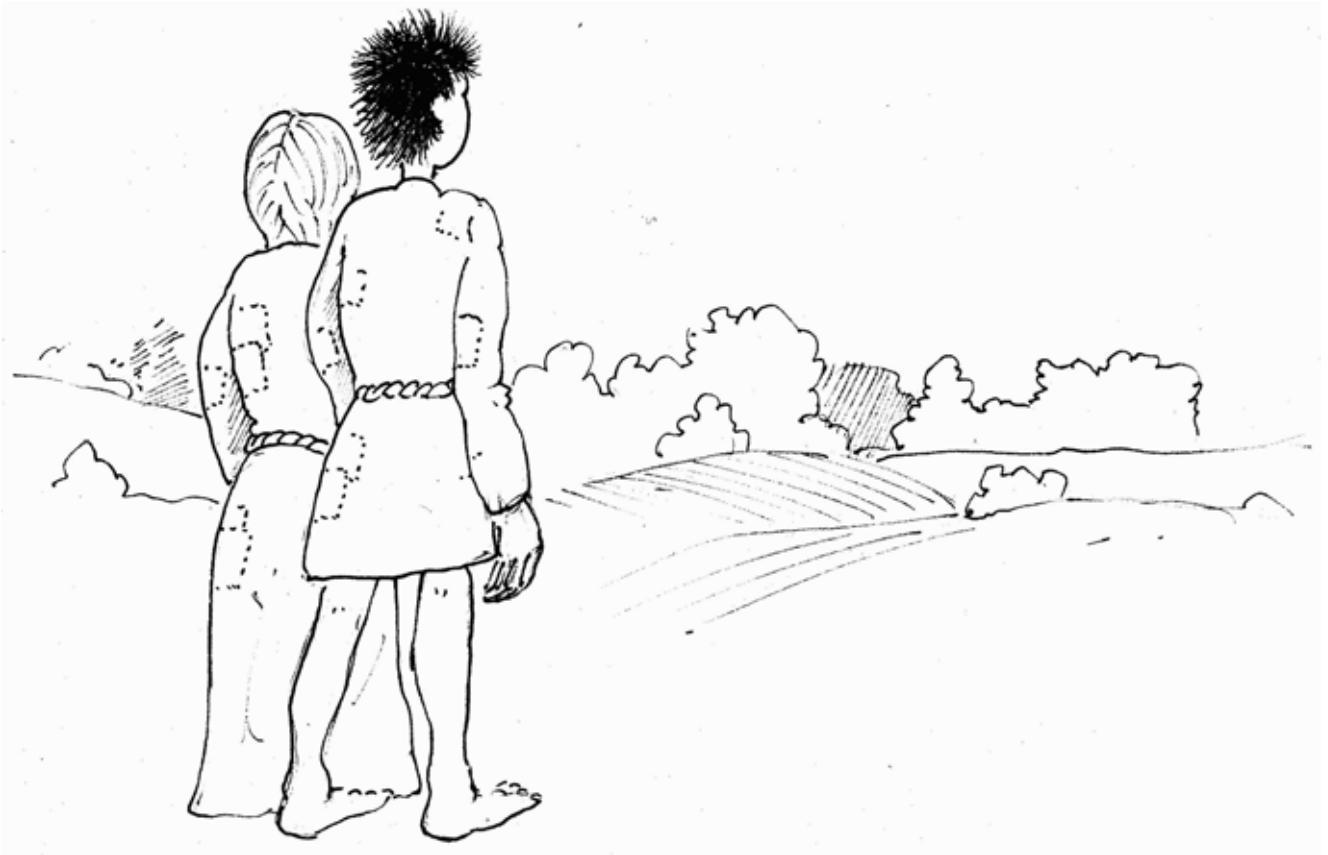


Geese and hens for eggs

And cows for milk



Ours is a good farm to have!



In Anglo-Saxon times, the family farm or *TUN* would have to grow very nearly all the food that a family like Cutha and Cyne's ate. Sometimes there would be chances to *barter* (swap) food with other farms — and very occasionally, there might be chance to go to market.

Free farmers like Cutha and Cyne's family would rent a farm that gave them enough land to support them and their servants. This amount of land was called a *hide*, a *sulung* or a *caracute* — it depended on where you lived — and it could vary in size from about 35-180 acres (0.15-0.75 square kilometres) depending on how good the soil was. But only *half* of that land would be in use at one time. The rest had to lie *fallow* (not being used) for a whole year to make sure that there was enough goodness in the soil for when it was needed.

Not all of what was grown could be eaten straight away either. A lot of food had to be stored away for the next winter, so that the family would not starve when the cold weather came round again, and nothing would grow.